



# samlexsolar®

A Division of Samlex America Inc.

## Mobile Power Guide

- Solar Charging Kits
- Charge Controllers
- Battery Chargers
- DC-AC Inverters
- Accessories

Power your  
AC devices  
using energy  
from the sun



[www.samlexsolar.com](http://www.samlexsolar.com)



# Index

Persunal Solar .....	2
How an RV Solar System Works .....	3
ALL-IN-ONE Solar Charging Kits.....	4
Customize Your Solar System .....	5
What's Your RV Lifestyle? .....	6
Charge Controllers.....	7
Portable SunChargers.....	9
Portable Solar Charging Kits .....	10
Inverter/Chargers .....	11
Pure Sine Wave Inverters .....	13
Modified Sine Wave Inverters .....	17
Inverter Accessories .....	19
Size Your Inverter.....	20
Battery Chargers .....	21
Transfer Switch.....	22
Battery Accessories .....	23
Not All Solar Kits are Made the Same .....	24
The Freedom to Go Off the Grid .....	25
Customer Support.....	26



# Persunal Solar

## Solar power doesn't have to be complicated.

Whether you want to brew a cup of coffee, power up your tools or tune in to your favourite TV program, we can make the process as simple as turning on the switch.

Why use solar? Enjoy the sound of nature rather than a noisy campsite or generator. Maintenance free and good for the environment, your RV solar system will pay for itself over and over as it extends the life of your batteries and saves you campsite hook up fees.

Samlex provides Persunal Solar solutions for everyday people. Easy to install and easy to operate, you don't need to be technically savvy to start using solar, we've got it covered.

Not sure how much power you need? [Try our online solar sizing calculator at \*\*www.samlexsolar.com\*\*, or call our live technical support team: 1-800-561-5885.](#)

You tell us what you want to power and we'll tell you how.

Since 1991, Samlex is a global supplier of power conversion products backed by the best customer service in the industry. Put our experience to work for you.

Samlex is persunal solar made simple.



### NEW Evolution™ Series Inverter/Chargers

1 Pure Sine Inverter

2 Battery Charger

3 Transfer Switch

**All in ONE device!**

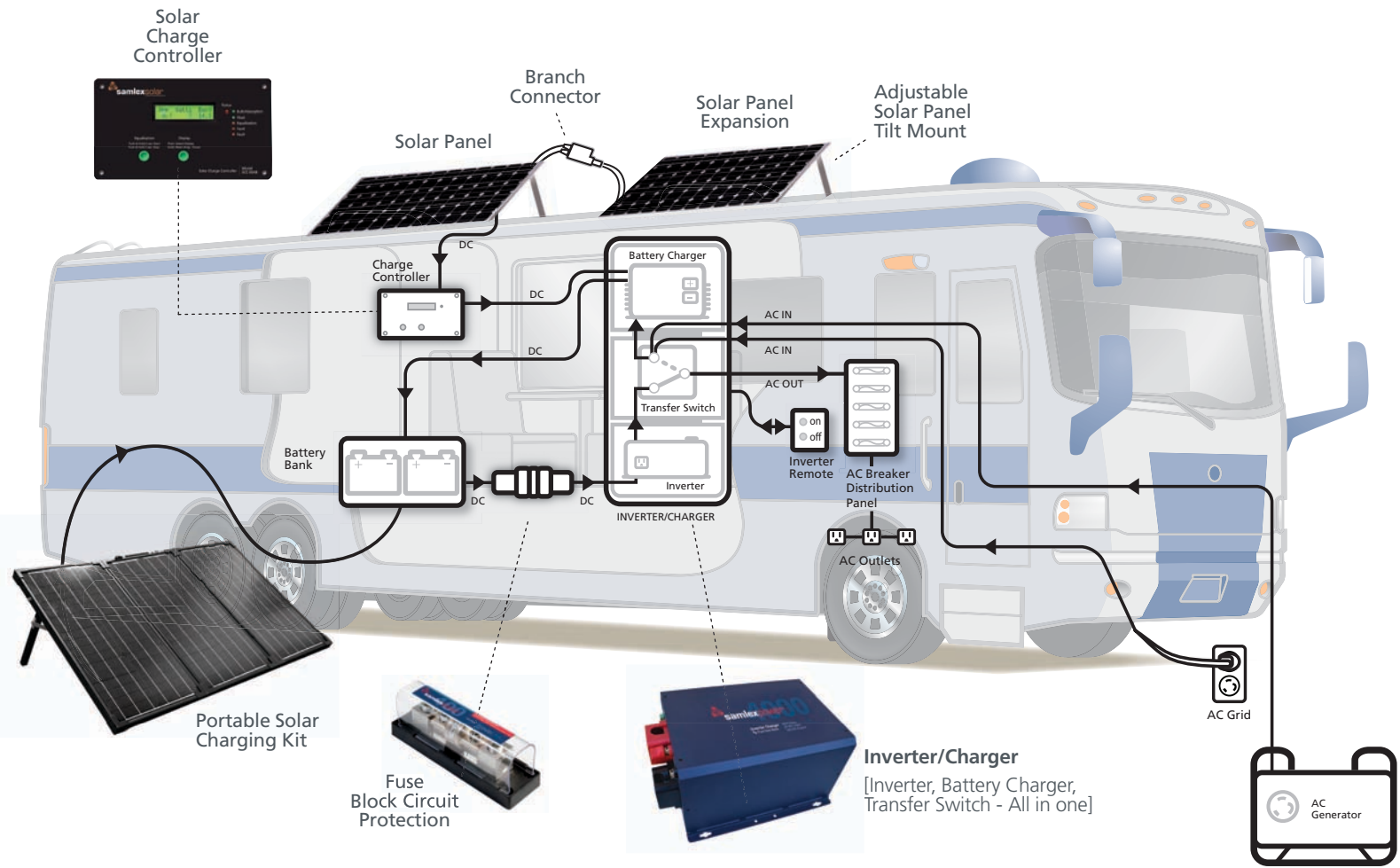
Power all of your household devices while dry camping off the grid!

2200 & 3000 Watt Models Available

See page 11 for details



# How an RV Solar System Works



You tell us what you want to power and we'll tell you how.  
Call Samlex Technical Support at **800 561 5885** or use our online Solar Sizing Calculator:  
[www.samlexsolar.com/calculator](http://www.samlexsolar.com/calculator)

# ALL-IN-ONE Solar Charging Kits



**SOLAR SIZING  
Calculator**  
[samlexsolar.com/calculator](http://samlexsolar.com/calculator)

## SRV Solar Charging Kits

Every kit includes an industry leading 30 Amp flush mount charge controller, connecting wires, mounting brackets and hardware. All the parts you need to start using solar in a few simple steps.

EASY TO FOLLOW do-it-yourself instructions make home installations a breeze. Watch our RV install video to see how at: [samlexsolar.com/customer-support/](http://samlexsolar.com/customer-support/)

MODEL	SOLAR PANEL	WEIGHT		DIMENSIONS		CHARGING AMPS
		(KG)	(LBS)	(MM)	(INCH)	
SRV-100-30A	100W	8.0	17.63	1200 x 552 x 35.3	47.25 x 21.73 x 1.39	5.81 Amps
SRV-150-30A	150W	12.0	26.4	660 x 1474 x 35.3	26.0 x 58.03 x 1.39	8.82 Amps



## What's in your kit:

1



### Solar Panel

Samlex solar panels are constructed with top of the line solar cells and materials that comply with the highest industry standards.

- High efficiency
- Water proof connectors
- High transparency tempered glass
- Anodized aluminium frames
- Resilient to harsh weather conditions
- 25 year, 80% output warranty

2

SCC-30AB



### Charge Controller

Samlex 30 Amp Flush Mount Charge Controllers regulate current and protect your batteries from over-charging. Features of this 4-stage Charger include: LED status indicators, LCD display, battery equalization and 8 charge settings for most battery types.

See page 7 for more details.

3

SCW-20-2



### Connecting Wires

A pair of weather resistant 20' solar panel connecting wires are provided to connect your panel to a charge controller or to an additional panel. One end of each wire is blunt and the other has a pre-assembled male or female multi-contact connector. Specifically designed for use in solar systems.

Also sold separately.

4

SM5-KIT



### Mounting Brackets & Hardware

Mounting brackets are provided to secure the solar panel to a flat surface while providing space underneath to facilitate cooling. Constructed in aluminium, the brackets have large surface areas on top for better stability and five available drilling holes on the bottom for convenient installation.

Also sold separately.

# Customize your Solar System

Purchase an SSP Solar Panel Kit and Charge Controller separately. Tailor a system based on your power needs. Combine different panels, or add a panel down the road.

## 1 SSP Solar Panel Kits

Each Panel Kit includes a solar panel, connecting wires & mounting brackets. Available in 100 and 150 Watts.

**Also use as an Expansion Kit!**  
Add branch connectors, SBC-2 (sold separately) to connect another panel in parallel.



MODEL	SOLAR PANEL	WEIGHT		DIMENSIONS		CHARGING AMPS
		(KG)	(LBS)	(MM)	(INCH)	
SSP-100-KIT	100W	8.0	17.63	1200 x 552 x 35.3	47.25 x 21.73 x 1.39	5.81 Amps
SSP-150-KIT	150W	12.0	26.4	660 x 1474 x 35.3	26.0 x 58.03 x 1.39	8.82 Amps

## 2 Solar Charge Controllers

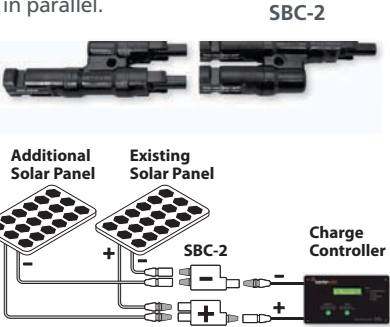


MODEL	AMPS	DESCRIPTION (See page 8 for product details)
SMC-10	10	Can manage up to <b>160W</b> of solar power
SMC-20	20	Can manage up to <b>330W</b> of solar power
SCC-30AB	30	Can manage up to <b>500W</b> of solar power
DC-BTS-A-C	-	Battery Temperature Sensor for SCC-30AB, sold separately

## 3 Solar Accessories

(Sold separately)

**Branch Connectors**  
Use to connect panels in parallel.



**Adjustable Panel Tilt Mount**  
Amplify charging by up to 40%. Over 30 adjustable settings.



### Extra Parts

**Connecting wires (20')**  
SCW-20-2



# What's Your RV Lifestyle?

Size your Solar System based on your power needs.

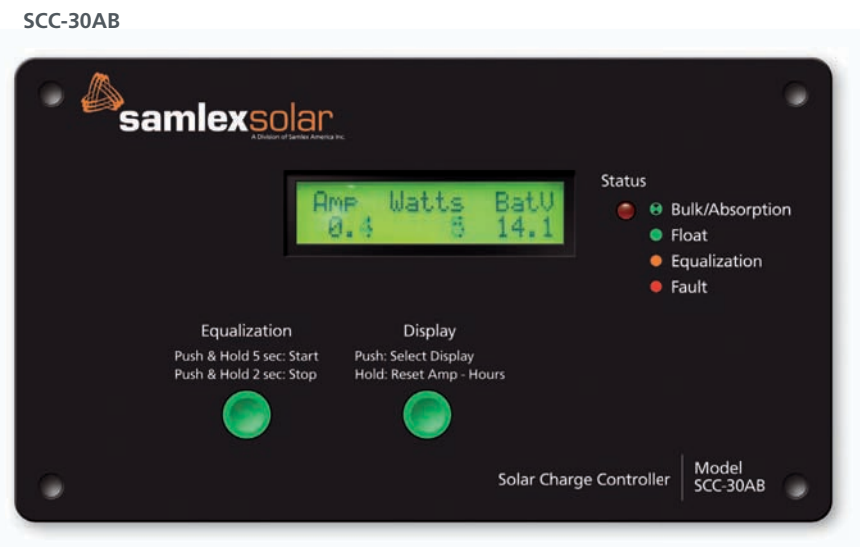


SOLAR	CHARGE CONTROLLER		
100W	SMC-10 10 Amps	Light Battery Water Pump	
150W	SMC-10 10 Amps	Light Battery Water Pump Fan	
200W	SMC-20 20 Amps	Light Battery Water Pump Fan Tablet Laptop	
250W	SMC-20 20 Amps	Light Battery Water Pump Fan Tablet Laptop Television	
300W	SCC-30AB 30 Amps	The above, PLUS... Kitchen Appliances Entertainment Unit	
400W	SCC-30AB 30 Amps	The above, PLUS... Vacuum Small Fridge	
450W	SCC-30AB 30 Amps	The above, PLUS.. more time!	
500W	SCC-30AB 30 Amps	You can run all the same stuff, for LONGER!	



# Charge Controllers

Regulate current flowing from a solar panel to your batteries and prevent over-charging. Packed with features designed to enhance charging performance and extend battery life, the SCC-30AB is the #1 RANKED Charge Controller by RV'ers.



## 30 AMPS Flush Mount Design

Included in EVERY SRV Solar Charging Kit  
Also Sold Separately

MODEL	WEIGHT		DIMENSIONS		CHARGING POWER
	(KG)	(LBS)	(MM)	(INCH)	
SCC-30AB	0.4	0.88	190 x 108 x 34	7.5 x 4.25 x 1.35	30 Amps
DC-BTS-A-C	n/a	n/a	10 Meters	33 Feet	n/a

### Design Features SCC-30AB

#### Can manage up to 500W of solar power!

- BATTERY EQUALIZATION
- 8 charge settings for most battery types
- 4-stage charging with LED indicators
- Digital LCD display indicates voltage, current and battery AH

#### 5 YEAR LIMITED WARRANTY

### Battery Temperature Sensor

Temperature compensated charging ensures that batteries are charged to maximum capacity in cool environments, and are well protected from over-charging in warm environments (Sold separately for use exclusively with SCC-30AB).

Recommended with EVERY Charge Controller to maintain and extend the life of your batteries.



DC-BTS-A-C

### Design Features SMC-10

#### Can manage up to 160W of solar power!

- 10 Amps
- Series controller, PWM control
- Automatic detection of 12/24V
- Multistage charging technology
- Temperature compensation
- LEDs indicate battery state of charge
- Large terminals guarantee a simple connection of solar panels, battery and load

#### 5 YEAR LIMITED WARRANTY



SMC-10

### Design Features SMC-20

#### Can manage up to 330W of solar power!

- 20 Amps
- Series controller, PWM control
- Automatic detection of 12/24V
- Voltage and current regulation
- Multistage charging technology
- Current compensated load disconnection
- Automatic load reconnection
- Temperature compensation

#### 5 YEAR LIMITED WARRANTY



SMC-20

MODEL	WEIGHT		DIMENSIONS		CHARGING POWER
	(KG)	(LBS)	(MM)	(INCH)	
SMC-10	0.15	0.33	145 x 97.15 x 23.9	5.7 x 3.82 x 0.94	10 Amps
SMC-20	0.36	0.8	186.95 x 96 x 43.94	3.78 x 7.36 x 1.73	20 Amps

# Portable SunChargers

Perfect for maintaining the battery in your RV, Car, Boat, Motorcycle or ATV with the power of the sun!

Samlex SunCharger poly-crystalline solar cells produce almost Double the Power of similar sized amorphous silicon chargers!



### Design Features

- Trickle charge any 12V battery using energy from the sun
- Maintenance-free and good for the environment
- Ultra slim, compact and weather-proof, won't rust!
- Rugged, durable construction - no metal or glass
- Comes with 10 ft. of weather resistant cable
- Integrated blocking diodes to prevent discharge from the battery

### 2 YEAR LIMITED WARRANTY



Plug into any connected 12V lighter socket to begin trickle charging your battery. Extends the life of your batteries and saves on replacement costs.

MODEL	WATTS	WEIGHT		DIMENSIONS		CHARGING POWER
		(KG)	(LBS)	(MM)	(INCH)	
SC-05	4.8W	0.55	1.2	304 x 254 x 3.5	12 x 10 x 0.53	0.30 Amps
SC-10	9.5W	0.90	2.0	304 x 381 x 13.5	12 x 15 x 0.53	0.56 Amps

# Portable Solar Charging Kits

Take solar with you. Easy to use! Just unfold, clamp to your battery and start charging.



- Solar panel is pre-wired with battery clamps for a quick and easy connection, 16' cable
- Adjustable legs allow for maximum sun exposure
- Built-in 3 stage 10 Amp charge controller manages the charge to the battery and prevents overcharging
- For use with 12V Lead Acid batteries (sold separately)

### 25 YEAR POWER WARRANTY

Great for RVs, Cabins, Camping, Boats and for Emergency Back-up Power



MODEL	WATTS	WEIGHT*		PANEL DIMENSIONS OPEN		PANEL DIMENSIONS FOLDED		CHARGING AMPS
		(KG)	(LBS)	(MM)	(INCH)	(MM)	(INCH)	
MSK-90	90W	11.45	25.2	1035 x 645 x 30	40.75 x 25.39 x 1.18	345 x 645 x 110	13.6 x 24.5 x 4.3	5.68 Amps
MSK-135	135W	16.18	35.6	1515 x 620 x 30	59.65 x 24.41 x 1.18	505 x 620 x 110	19.9 x 24.4 x 4.3	8.52 Amps

\* Weight includes carry bag and cables.

### How Much Power Can I Generate Per Day?

MSK-90
Up to <b>35</b> Battery Amp Hours*
MSK-135
Up to <b>53</b> Battery Amp Hours*

\* Based on optimal sunlight and turning your panel a few times throughout the day to follow the sun.



# Inverter/Chargers

## Evolution™ Series

Inverter, Battery Charger and Transfer Switch – All in one device. This robust power system automatically switches between shore power, generator and your batteries as different power sources become available.



### Product Features

- Pure Sine Wave Inverter
- 3 or 4 Stage Battery Charger w/ Equalization
- <16ms Transfer from Grid/Generator to Inverter
- Standard Mounting Footprint
- Wide Operating Temperature Range
- Programmable Power Save Mode
- Temperature Controlled Cooling Fans
- Conformally Coated Circuit Board

### Two Separate AC Inputs for Grid & Generator

Connect Grid & Generator simultaneously, no need to reconfigure system as power availability changes. Priority is given to Grid. Both AC input ranges are fully programmable.

### Adaptive Battery Charger

Algorithm monitoring in the Bulk Stage assesses the battery's condition. The remaining charging stages are based on the battery's condition rather than a pre-set charging time. Reduces excess charging time and extends life of battery.

### Synchronized Transfer at Zero Crossing

Zero transfer time when switching from Inverter to Grid. When grid comes on, the inverter synchronizes with the wave form and then transfers instantly at zero crossing without any interruption to the load.

### Input for Solar Charge Controller

Connect a solar charge controller directly to the EVO™ through the Battery Charger External DC Input (Solar Input).

### High Surge Inverter with Active Power Boost

In addition to 3X surge on start up, loads can exceed the continuous power output by the Power Boost Allowances without triggering an overload fault. Get 150% for 5 seconds or 120% for 5 minutes!

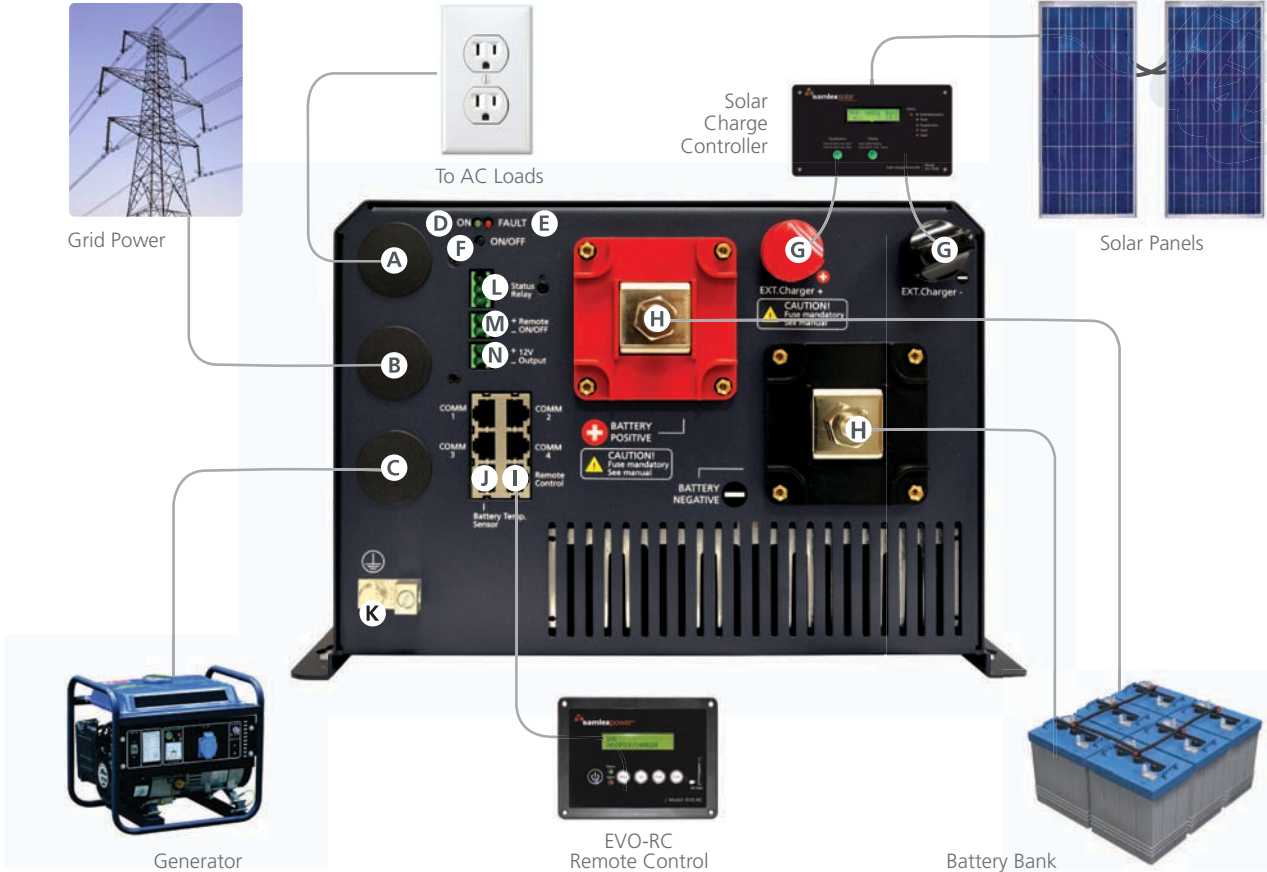
### Online Mode

Use to prioritize Batteries/Inverter over the grid. Choose to operate primarily on solar power even when grid is available. In Online Mode, grid is only used as back-up power when batteries necessitate charge.

### Bullet Proof Intelligence

9 physical points of protection monitoring are scanned up to 10,000 times per second to detect adverse internal and external conditions. When detected, the unit will initiate a healthy shutdown before any damage can be done, making the EVO™ practically indestructible in the field.

MODEL	INPUT VDC	OUTPUT VAC	OUTPUT POWER	SURGE	BATTERY CHARGER	TRANSFER SWITCH	DIMENSIONS		WEIGHT	
							(MM)	(IN)	(KG)	(LBS)
EVO-2212	12VDC	120VAC	2200W	6600W	100A	40A	325 x 426 x 207	12.79 x 16.77 x 8.15	27	59
EVO-3012	12VDC	120VAC	3000W	9000W	130A	70A	325 x 426 x 207	12.79 x 16.77 x 8.15	29	64
EVO-RC	For use with EVO-2212, EVO-3012. 33ft cable.						144 x 114 x 35.5	5.6 x 4.5 x 1.4	0.2	0.4



- A** AC Input for Grid (prioritized)

**B** AC Input for Generator

**C** Output to power AC Loads

**D** LED Status Indicator

**E** LED Fault Indicator
- F** ON/OFF Button

**G** Battery Charger External DC Input (Solar Input)

**H** Battery Terminals

**I** Remote Control Jack (EVO-RC)
- J** Battery Temperature Sensor Jack (Sensor Included)

**K** Ground Connector

**L** Status Relay Contact – Use for GenStart or Fault Condition
- M** Remote Input – Use to turn inverter ON or OFF with Ignition Start, Ignition AUX, or any other Remote ON/OFF switch

**N** Low Power 12V Output Source



### Optional Remote Control w/ Removable SD Card for Data Logging

The EVO-RC remote control (sold separately) can accept a 16GB SD card to capture data. Log historic power consumption, inverter functionality, battery charging activity, faults and the conditions leading up to them. Use the remote to program parameters and view performance details in real time. 33 ft RJ-45 data cable included.

2 YEAR LIMITED WARRANTY



# Pure Sine Wave Inverters

## SSW Series



MODEL	INPUT VDC	OUTPUT VAC	OUTPUT POWER	SURGE	DIMENSIONS		WEIGHT		INVERTER INSTALLATION	OUTLETS
					(MM)	(IN)	(KG)	(LBS)		
SSW-350-12A	12 VDC	115 VAC	350W	700W	200 x 155 x 57	7.87 x 6.10 x 2.24	0.700	1.50	Battery clamps	2
SSW-600-12A	12 VDC	115 VAC	600W	1200W	230 x 155x57	9.06 x 6.10 x 2.24	0.900	2.00	Battery clamps	2
SSW-1000-12A	12 VDC	115 VAC	1000W	2000W	265 x 222x88	10.43 x 8.74 x 3.46	2.600	5.70	DC-1000-KIT*	2
SSW-1500-12A	12 VDC	115 VAC	1500W	3000W	310 x 222 x 88	12.2 x 8.74 x 3.46	3.200	7.10	DC-2000-KIT*	2
SSW-2000-12A	12 VDC	115 VAC	2000W	4000W	310 x 222 x 88	12.2 x 8.74 x 3.46	3.800	8.40	DC-2500-KIT*	2
SSW-R1-12B	Included with EVERY 1000, 1500 & 2000W Model. Comes with 10' of wire.				102 x 82 x 35	4.0 x 3.2 x 1.4	0.056	0.12	n/a	n/a

\* Optional, sold separately.

## Reliable AC Power at an Affordable Price

Ideal for powering office equipment, televisions, DVDs, household appliances, portable electronics and other sensitive loads from your car, truck, boat, RV or solar system batteries.

### Design Features

- Compact & lightweight
- High surge: 2X continuous power
- True Sine Wave Power - ideal for sensitive loads
- Soft start and cool surface technology
- 300 & 600 Watt models have USB charging port
- 1000, 1500, 2000 Watt models have two GFCI protected outlets
- Protections: Thermal, battery overload, short circuit & earth fault

2 YEAR LIMITED WARRANTY



Remote Control included with every 1000, 1500 & 2000W model!



SSW-R1-12B



Use Pure Sine Wave for...



- Inductive loads like microwaves and motors – they'll run quieter and cooler
- TVs, radio equipment, fax machines, fans and flourescent lights; audible and electric noise will be reduced
- Cordless tool chargers and variable speed tools
- Ideal for devices with built-in-clocks and other applications that are sensitive to AC voltage irregularity

Use Modified Sine Wave for...



- Heavy duty power tools
- Water and air pumps, air compressors
- Older televisions, VCRs and game systems
- Incandescent lighting
- Kitchen appliances such as toasters, blenders, hot plates and kettles
- Charging cell phones, laptops, MP3 players and other portable electronics





# Pure Sine Wave Inverters

## PST Series



MODEL	INPUT VDC	OUTPUT VAC	OUTPUT POWER	SURGE	DIMENSIONS (MM)		WEIGHT (KG) (LBS)		INVERTER INSTALLATION	OUTLETS
PST-300-12	12 VDC	120 VAC	300W	500W	246 x 146.3 x 65.5	9.68 x 5.76 x 2.58	1.32	2.90	-	2
PST-600-12	12 VDC	120 VAC	600W	1000W	276.2 x 240.6 x 82	10.87 x 9.47 x 3.23	2.50	5.40	DC-1000-KIT	2
PST-1000-12	12 VDC	120 VAC	1000W	2000W	397 x 240.6 x 82	15.63 x 9.47 x 3.23	4.00	8.80	DC-2000-KIT	2
PST-1500-12	12 VDC	120 VAC	1500W	3000W	468.2 x 263 x 105.6	18.43 x 10.35 x 4.16	5.7	12.7	DC-2000-KIT	2
PST-2000-12	12 VDC	120 VAC	2000W	3500W	468.2 x 263 x 105.6	18.43 x 10.35 x 4.16	5.9	13.0	DC-2500-KIT	2
SA-3000K-112	12 VDC	120 VAC	3000W	6000W	452 x 208 x 166	17.8 x 8.2 x 6.5	9.8	22.0	DC-3500-KIT	2
RC-15A	Optional remote for 600 and 1000 Watt models. 15' cable. Power ON/OFF.									
RC-200	Optional remote for 1500 and 2000 Watt models. 15' cable. Detailed monitoring & remote power operation.									

## Heavy Duty

All models are now Safety Certified to UL Standards, giving you peace of mind when it comes to safe and reliable AC Power. Built for heavy loads and long periods of continuous use.

### Design Features

- Silent Operation – temperature controlled fan reduces energy consumption
- Extremely low interference – won't disrupt the reception of your TV, radio or audio equipment
- 2 GFCI protected outlets
- 1500 and 2000W models can be hard wired
- Clean and reliable AC power identical to household electricity
- Power sensitive devices like TV's, stereos & home office equipment
- Commercial grade design suitable for heavy duty loads, long periods of continuous operation & for emergency back up
- Wide operating DC input range: 10.5 to 16.5 VDC
- High Surge

2 YEAR LIMITED WARRANTY



### RC-200 Design Features

- LCD displays AC Volts, AC Amps, frequency, power (watts), and power factor
- LED Indicators for overload, over temperature and power
- Includes 15' cable
- Sold separately

## 3000 Watt High Power Pure Sine Wave Inverter

### SA-3000K-112

High performance, commercial grade DC-AC Power Inverter. CAN BE HARDWIRED directly to the breaker panel in your boat or mobile home.

### Design Features

- Isolated input and output
- Advanced microprocessor design
- 2 GFCI protected outlets
- Load controlled cooling fan
- Output frequency 50/60 Hz selectable
- Power save mode to conserve energy
- 2X surge rating, 6000W
- Tri-color LEDs indicate input/output levels and failure status
- Protections: overload, short circuit, reverse polarity, over temperature, over/under input voltage

2 YEAR WARRANTY





# Modified Sine Wave Inverters

## SAM Series



MODEL	INPUT VDC	OUTPUT VAC	OUTPUT POWER	SURGE	DIMENSIONS		WEIGHT		INVERTER INSTALLATION	USB PORT	OUTLETS
					(MM)	(IN)	(KG)	(LBS)			
SAM-100-12	12 VDC	115 VAC	100W	200W	130 x 64 x 39	5.1 x 2.5 x 1.5	0.13	0.30	12V plug	2.1A	1
SAM-250-12	12 VDC	115 VAC	250W	500W	15 x 114.4 x 46	5.9 x 4.5 x 1.8	0.42	0.92	12V plug adaptor	2.1A	1
SAM-450-12	12 VDC	115 VAC	450W	900W	151 x 154 x 56.5	6.0 x 6.1 x 2.2	0.60	1.30	12V plug adaptor/ battery clamps	2.1A	2
SAM-800-12	12 VDC	115 VAC	800W	1600W	218 x 180 x 59	8.6 x 7.0 x 2.4	1.32	2.91	battery clamps	2.1A	2
SAM-1000-12	12 VDC	115 VAC	1000W	2000W	250 x 180 x 59	8.6 x 7.0 x 2.4	1.69	3.72	DC-1000-KIT	no	2
SAM-1500-12	12 VDC	115 VAC	1500W	3000W	283 x 202 x 84	11.4 x 7.9 x 3.3	3.20	7.10	DC-2000-KIT	no	2
SAM-2000-12	12 VDC	115 VAC	2000W	4000W	345 x 202 x 84	13.58 x 7.9 x 3.3	3.90	8.50	DC-2500-KIT	no	3
SAM-3000-12	12 VDC	115 VAC	3000W	6000W	420 x 202 x 84	16.5 x 7.9 x 3.3	5.30	11.50	DC-3500-KIT	no	3
PSE-12275A	12 VDC	120 VAC	2750W	4500W	216 x 495 x 160	8.5 x 19.5 x 6.3	10.12	22.3	DC-3500-KIT	no	1
RC-15	For use with PSE-12275A, 15' cable.										
SAM-RC	For use with 1000 to 3000 Watt models. 10' cable.										

## Durable Construction

EASY TO INSTALL AND OPERATE. Use SAM Modified Sine Wave inverters to power computers, power tools, TVs, stereos, kitchen appliances, compact refrigerators, lights and many other household and electronic devices within the specified wattage range.



## Design Features

- Compact and lightweight design
- 100 to 800 Watt models include a USB Charging Port  
USB Charging Ports are now 2.1 AMPS for charging the newest smart phones and tablets!
- Load Controlled Cooling Fan
- Low Battery Input Alarm
- Soft start technology
- Cool surface technology
- Universal protection circuit: thermal, battery, overload, short circuit, earth fault
- Safety certified to UL standards

2 YEAR LIMITED WARRANTY



## 2750 Watt Heavy Duty Modified Sine Wave Inverter

### PSE-12275A

CAN BE HARDWIRED. High efficiency modified sine wave DC-AC inverter converts 12 VDC to 120 VAC, 60 Hz.

### Design Features

- Wide DC voltage range of 10.5 VDC to 16.5 VDC
  - High efficiency
  - Modified sine wave output voltage
  - Overload protection
  - High output current surge
  - Low battery alarm/shut down
  - Low idle power draw of less than 0.6 Amps
  - Optional remote control
- 2 YEAR LIMITED WARRANTY**



SAM-RC  
Optional  
Remote  
Control

RC-15 Optional  
Remote Control



PSE-12275A



# Inverter Accessories

## Inverter Installation Kits

Connect your inverter to a battery bank SAFELY AND SIMPLY.

Choose your kit based on the size of your inverter

MODEL	INVERTER	FUSE SIZE	CABLE GAUGE	CABLE LENGTH
DC-1000-KIT	12V, 600-1000W 24V, 1200-2000W	100A	AWG #4	2 x 10'
DC-2000-KIT	12V, 1000-1700W 24V, 2000-3400W	200A	AWG #2	2 x 10'
DC-2500-KIT	12V, 1700-2500W 24V, 3400-5000W	300A	AWG #2½	2 x 10'
DC-3500-KIT	12V, 2500-3500W 24V, 5000-7000W	400A	AWG #4½	2 x 10'



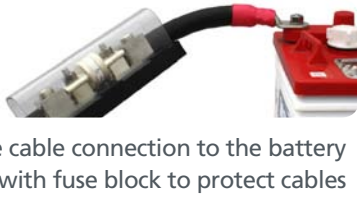
### Connecting the Fuse Block to the Battery



Battery end of positive cable cut & prepared for fitting into fuse block



Fitted fuse assembly



Positive cable connection to the battery with fuse block to protect cables

FUSE ASSEMBLIES AND FUSE BLOCK		
DC-FA-100	100A	Fuse assembly*
DC-FA-200	200A	Fuse assembly*
DC-FA-300	300A	Fuse assembly*
CFB2-400	400A	Fuse block

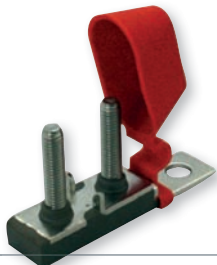


FUSE INSULATING CAP SINGLE POLE FUSE BAR

\* Fuse assembly includes single pole fuse bar, fuse, insulating cap and hardware.

### DOUBLE POLE FUSE BAR WITH INSULATING CAP (no fuse)

DC-FB-2 Includes nuts and washers (not shown)



INDIVIDUAL REPLACEMENT FUSES	
MRBF-100	100A
MRBF-200	200A
MRBF-300	300A
JLLN-400	400A



MRBF-300

JLLN-400

# Size your Inverter

DEVICE*	SAM-100-12	SAM-250-12	SAM-450-12	SAM-800-12	SAM-1000-12	SAM-1500-12	SAM-2000-12	SAM-3000-12	SSW-350-12A	SSW-600-12A	SSW-1000-12A	SSW-1500-12A	SSW-2000-12A	PST-300-12	PST-600-12	PST-1000-12	PST-1500-12	PST-2000-12	SA-3000K-112	EVO-2212	EVO-3012
Incandescent Bulb (60 Watts)	•	•	•	•	•	•	•	•	•	•	•	•	•	•	•	•	•	•	•	•	•
Compact Fluorescent Bulb (17 Watts)	•	•	•	•	•	•	•	•	•	•	•	•	•	•	•	•	•	•	•	•	•
Play Station 3† (190 Watts)				•	•	•	•	•		•	•	•	•		•	•	•	•	•	•	•
Wii Console† (17 Watts)	•	•	•	•	•	•	•	•	•	•	•	•	•	•	•	•	•	•	•	•	•
DVD Player (10 Watts)	•	•	•	•	•	•	•	•	•	•	•	•	•	•	•	•	•	•	•	•	•
Small Stereo (10 Watts)	•	•	•	•	•	•	•	•	•	•	•	•	•	•	•	•	•	•	•	•	•
TV - 19" CRT (90 Watts)		•	•	•	•	•	•	•	•	•	•	•	•	•	•	•	•	•	•	•	•
TV - 32" LCD (150 Watts)			•	•	•	•	•	•	•	•	•	•	•		•	•	•	•	•	•	•
Clock Radio (5 Watts)									•	•	•	•	•	•	•	•	•	•	•	•	•
HD Receiver with DVR (70 Watts)		•	•	•	•	•	•	•	•	•	•	•	•	•	•	•	•	•	•	•	•
Cell Phone Charger (25 Watts)	•	•	•	•	•	•	•	•	•	•	•	•	•	•	•	•	•	•	•	•	•
Electric Blanket with Timer (150 Watts)									•	•	•	•	•	•	•	•	•	•	•	•	•
Hair Dryer (1250 Watts)						•	•	•			•	•	•				•	•	•	•	•
3/8 Variable Speed Drill (350 Watts)										•	•	•	•		•	•	•	•	•	•	•
Lithium Ion Battery Charger (10 Watts)									•	•	•	•	•	•	•	•	•	•	•	•	•
Ceiling Fan (75 Watts)		•	•	•	•	•	•	•	•	•	•	•	•	•	•	•	•	•	•	•	•
Microwave (900 Watts)							•	•					•				•	•	•	•	•
Coffee Maker (1200 Watts)							•	•				•	•				•	•	•	•	•
Blender (300 Watts)				•	•	•	•	•		•	•	•	•		•	•	•	•	•	•	•
Toaster (1000 Watts)						•	•	•				•	•				•	•	•	•	•
Vacuum Small Upright (550 Watts)							•	•					•				•	•	•	•	•
Laptop Computer (100 Watts)			•	•	•	•	•	•	•	•	•	•	•	•	•	•	•	•	•	•	•
Desktop Computer with 15" Monitor (350 Watts)											•	•	•			•	•	•	•	•	•
Ink Jet Printer - Small (50 Watts)		•	•	•	•	•	•	•	•	•	•	•	•	•	•	•	•	•	•	•	•
Laser Printer - Small High Surge (350 Watts)												•	•				•	•	•	•	•
Photographic Strobe - High Surge (300 Watt seconds)												•	•				•	•	•	•	•
Fridge - 16 Cubic Feet - High Surge (725 Watts)								•											•	•	•

\* NOTE: This guide is provided for reference only. Every effort has been made to ensure the relevance and accuracy of the information presented. Due to periodic changes and/or variations made by manufacturers, Samlex America, Inc. cannot be held responsible for any changes, errors, or omissions as a result of using this reference guide.

† NOTE: All references made to brands, trademarks and trade names are only used here for reference and does not imply in any way a sponsorship, affiliation, or endorsement of these products or services by Samlex America, Inc. Each brand, trademark or trade name listed here is the property of its respective owner. Samlex America, Inc. assumes no credit or liability related to these brands, trademarks or trade names.

# Battery Chargers

Protect your battery investment. Upgrade your converter to a Samlex SEC Smart Charger!

Use utility power or a generator to rapidly charge and maintain your batteries.



### Design Features

- 2 or 3 Stage Charging (selectable)
- 120 or 230 VAC, 50/60 Hz (selectable)
- Analog meter display
- For all types of Lead Acid Batteries
- Charge with a battery load – or stand alone
- Safety Certified to stringent UL standards



**900-RC (sold separately)**  
Optional 900-RC remote control panel: Power ON/OFF, monitor charging status

**2 YEAR LIMITED WARRANTY**



MODEL	INPUT VOLTAGE	INPUT FREQUENCY	BATTERY VOLTAGE	CHARGING CURRENT	DIMENSIONS		WEIGHT	
					(MM)	(IN)	(KG)	(LBS)
SEC-1215UL	120 VAC	50 / 60 Hz	12 VDC	15 Amps	216 x 213 x 84	8.5 x 8.4 x 3.3	2.17	4.8
SEC-1230UL	120 VAC	50 / 60 Hz	12 VDC	30 Amps	274 x 213 x 84	10.8 x 8.4 x 3.3	2.90	6.4
SEC-1250UL	120 VAC	50 / 60 Hz	12 VDC	50 Amps	331 x 244 x 97	13.03 x 9.61 x 3.82	4.08	9.0
SEC-1280UL	120 VAC	50 / 60 Hz	12 VDC	80 Amps	380 x 244 x 97	14.96 x 9.61 x 3.82	5.39	11.9
SEC-2415UL	120 VAC	50 / 60 Hz	24 VDC	15 Amps	274 x 213 x 84	10.8 x 8.4 x 3.3	2.90	6.4
SEC-2425UL	120 VAC	50 / 60 Hz	24 VDC	25 Amps	331 x 244 x 97	13.03 x 9.61 x 3.82	4.08	9.0
SEC-2440UL	120 VAC	50 / 60 Hz	24 VDC	40 Amps	380 x 244 x 97	14.96 x 9.61 x 3.82	5.39	11.9
900-RC	For use with SEC-1250, 1280, 2425, 2440. 33' cable. LED indicators for power, boost/absorption and float stage.							

# Transfer Switch

Automatically switch to utility power when it's available

Completely hands-free, a Samlex transfer switch automatically detects Utility or Generator Power when it's available and allows a seamless transition from your inverter or battery bank.



STS-30 Transfer Switch

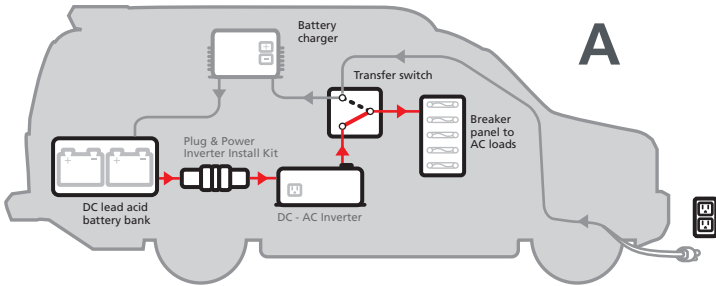
### Design Features

- Automatically switches between 2 separate AC input sources: Utility Power or a Generator and Inverter/Battery Bank
- Has a rated capacity of 30 Amps at 120 VAC and is suitable for a 30 Amp Utility Power Cord and a Generator of up to 3.6 KVA capacity
- Uses a heavy duty Double Pole Double Throw (DPDT) relay for switching both the Line and Neutral
- Can be installed on the line side of the main breaker panel, allowing switching of the entire load or on the load side to only switch dedicated circuits
- DIP Switch select to enable a time delay when transferring to a generator

### How your transfer switch works

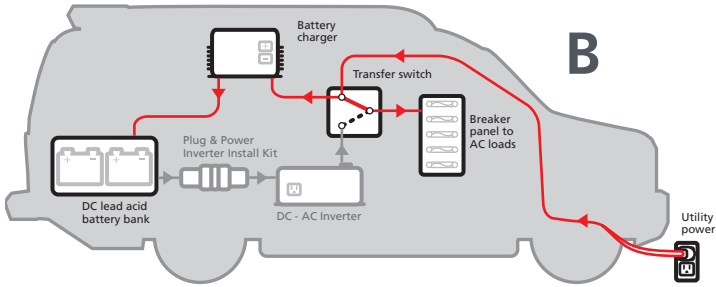
#### A WHEN UTILITY POWER IS UNAVAILABLE...

When you're on the road and utility power is not available, the transfer switch detects your battery bank system and uses it to feed the breaker panel.



#### B WHEN UTILITY POWER IS AVAILABLE...

As soon as you plug in, the transfer switch automatically switches off your mobile system and uses utility power to feed the breaker panel. Connect a battery charger to the terminal provided on the transfer switch and your batteries will also charge when plugged in.





# Battery Accessories



AUTOMATIC CHARGE ISOLATOR  
**ACR-160**

Sometimes known as a Battery Separator, Isolator, or Automatic Charging Relay... ACR-160 is a voltage dependant switch that separates or parallels starter and auxiliary battery banks in order to:

- (1) Protect the starter battery from deep discharge
- (2) Recharge the two battery banks

**Design Features**

- Microprocessor controlled, dual sensing
- Easy to install - does not require changing the existing circuit of the alternator
- Potted, waterproof, sealed unit
- Very low standby current
- Combines battery banks for charging and isolates them when charging has stopped:
  - Provides priority for charging only the starter battery first
  - Protects from excessive discharging of the starter battery
- Automatic detection of 12 or 24 VDC systems
- 160 Amp continuous rated, 480 Amp peak (250 msec)
- Monitoring of relay activation by external LED
- Over voltage protection

**2 YEAR LIMITED WARRANTY**



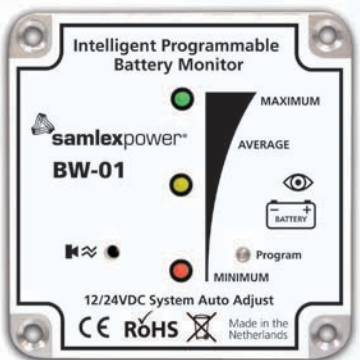
BATTERY GUARDS  
**BG-60**

- 60 Amps
- RoHS Compliant
- BG-200**
- 200 Amps
- RoHS Compliant

**Design Features**

- Can be programmed to connect / disconnect at several different voltages
- Batteries last longer
- Prevents damage to connected components
- Protects against excessive voltage caused by faulty alternators or chargers
- Prevents excessive discharge of batteries

**2 YEAR LIMITED WARRANTY**



BATTERY MONITOR  
**BW-01**

Intelligent micro-processor based, panel mounted battery voltage monitor.

**Design Features**

- Multi-colored LED's indicate:
  - Terminal voltage
  - Battery under-charge status
- High voltage limit during charging, limit can be programmed
- Low voltage alarm (with buzzer), limit can be programmed
- 3 day timer with automatic deactivation at 10.4V (12V battery) or 20.8V (24V battery) to prevent excessive drain

**2 YEAR LIMITED WARRANTY**



**Samlex Solar Kit Features**

Samlex Solar panels are weather resistant and built to last – even in harsh conditions of hail or heavy snow. Aluminum frames will not rust. **14 – 17.5% efficiency, 2X more than amorphous silicon panels!** Samlex guarantees its solar panels with a 25 year power warranty.

Every Samlex SRV ALL-IN-ONE Solar Charging Kit includes a flush mount 30A charge controller designed to quick connect to the cables attached on the back of your solar panel. One 30A controller can manage up to 500 Watts of solar power, so expanding your system is easy – just add panels as needed. **Battery equalization restores battery capacity, revives efficiency and extends battery life.** The digital display shows charging stage, voltage, current, and battery Amp Hours. Samlex offers a 5 year warranty.

Every Kit includes a set of aluminum mounting brackets with all of the hardware required to mount your solar panel securely to your RV rooftop. Mounting brackets are specifically designed for placement flexibility around rooftop obstacles.

To ensure a leak-free installation, Samlex provides industry leading fasteners that expand to prevent moisture from getting inside your RV.

Samlex Solar uses only the industry's highest grade connecting wires, all coated with UV protective material to combat weather decay. Inexpensive cables and connectors without weather protection can erode after only a few years of use. **Samlex cables are built to perform consistently in the toughest conditions –** we don't believe in cutting corners when it comes to quality!

Samlex Makes Solar SIMPLE... by including every part you need to get your system up and running in a few easy steps.

Call our live technical support any time and get a real person on the phone to answer all your solar questions. Samlex Solar prides itself in offering the Best After-Sales Service in the industry!



SCC-30AB Charge Controller



SRV-150-30A



# The Freedom to Go Off the Grid.

A great way to improve your boondocking experience is to install a Samlex Solar System on your RV. Extend your capabilities and explore the great outdoors knowing your batteries and electrical system will have the charging power you need for the necessities of life. If you want to get on the road less travelled this season and see some sights outside of your RV parks and resorts, installing solar is just about the best thing you can do.



Samlex makes this easy with top quality, high efficiency solar panels, state of the art solar charge controllers and mounting and electrical system components that will last the lifetime of your RV. Review our Solar Systems Guide with your trusted RV dealer today. You will be surprised to see how easy it is to select, install and configure the solar system that is right for you.

**Looking to keep those batteries in tip-top shape when you are out in the wild?** A simple solar installation of about 100-200W is perfect to ensure your DC system gets the recharge it needs from the power of the sun. This size system, usually one or two panels, is great for ensuring your basics are covered. DC lights, water pumps, phone chargers and other small loads will all have the power they need when your batteries are topped up each day with electricity generated from the sun. A simple, economical charge controller like the SMC-10 handles a safe charge to your batteries and provides a handy display on the status of your system. This type of installation is easily expandable in the future and great for ensuring your batteries are at 100% when your unit is parked for storage.

**Need more power?** A higher power solar installation can help you thrive, not just survive on long boondocking and dry camping adventures. A larger solar installation, 200W-500W+ provides more charge current for larger battery banks. This lets the off-grid lifestyle really shine; powering larger loads and for greater length of time! Need outdoor lighting? Satellite Cable? Entertainment centers and game consoles? A larger solar array can provide the energy required to access the comforts of home, even without plugging into a pedestal. A larger solar system can support small appliances, refrigeration, tools and other necessities, all while reducing or eliminating the need for a gas guzzling generator.

Whether you are out in the mountains for elk season, hauling your ATVs to the desert, finding that perfect curve in the river for casting your fly or just trying to get away from it all, you can put the power of the sun at your fingertips. The state-of-the-art Samlex SCC-30AB charge controller is a high efficiency solar charger and system display panel all in one. Good for about 500W of solar power, the SCC-30AB is used even in smaller installations where an attractive, powerful and intuitive display is desired.

**Samlex Solar makes all of this easy with expandable, flexible solar systems for your RV. Talk to your RV Dealer or service center! We make sizing and selecting your solar options easy and worry free.**

## Customer Support

Samlex America Inc.  
Corporate Head Office  
British Columbia, Canada

**TOLL FREE: 1 800 561 5885**  
**[www.samlexsolar.com](http://www.samlexsolar.com)**

North American Sales Division: [sales@samlexsolar.com](mailto:sales@samlexsolar.com)

Latin American Sales Division: [international@samlexsolar.com](mailto:international@samlexsolar.com)

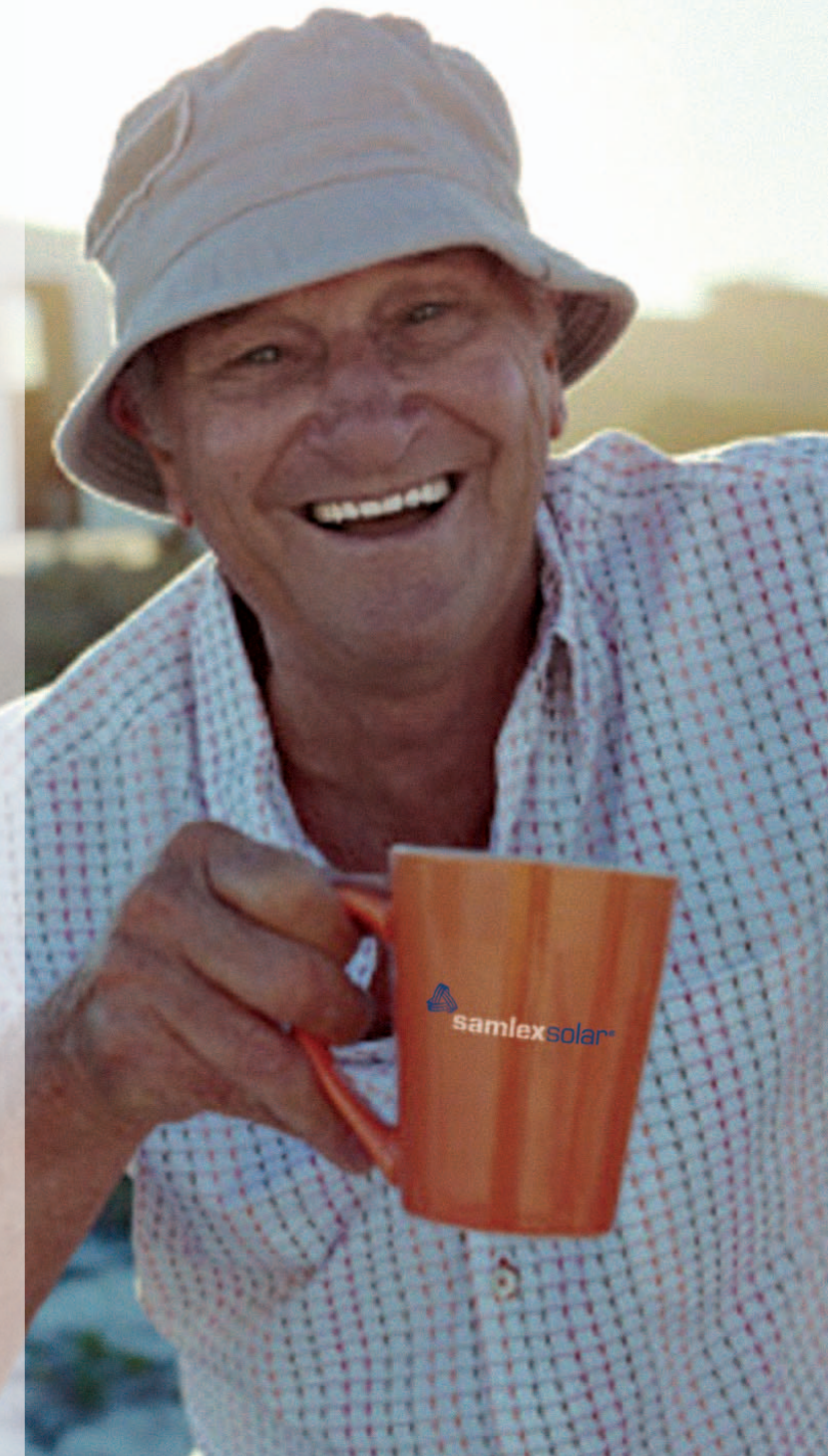
### Our Promise to You

- Experienced Manufacturing (20 + years)
- Quality Products
- Competitive Pricing
- Responsive and Personal Customer Service
- Extended Warranty
- Live Technical Support

**Samlex provides innovative power conversion products while providing you with the BEST CUSTOMER SERVICE in the industry.**

#### Liability Disclosure

Power Inverters can be very dangerous if not selected, used, installed or maintained properly. When in doubt, a qualified electrical professional should be contacted for advice. Contact with high voltage could result in injury, death or risk of fire.







**Shhhh....**

Authorized Samlex Dealer